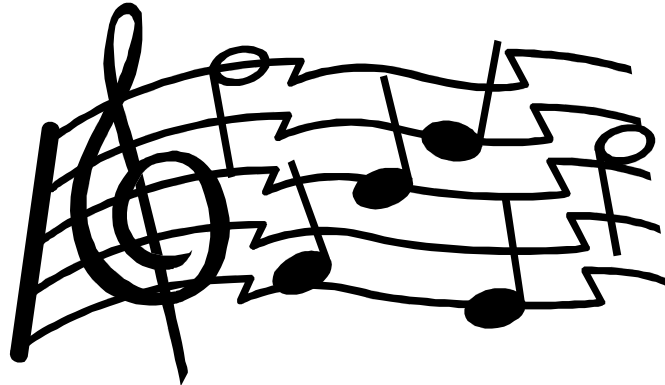


**STAPLEY JUNIOR HIGH SCHOOL
CHORAL MUSIC HANDBOOK
2007-2008**



Welcome to Stapley Junior High Choruses! This will be an exciting and challenging year as we shape and develop the choruses here at Stapley Junior High into performing organizations in which we are proud to participate. It is up to us to set high standards for the future!

Your chorus will be successful, interesting, and fun only if each member gives 100% effort every day, both as an individual and as a team member. Following rules and paying attention require the self-discipline that will make rehearsals enjoyable and worthwhile for all.

The goals for chorus (which align with the District Music Standards and the Arizona State Standards) include: appreciating different styles of music; improving music reading skills; learning melodic and rhythmic dictation; expanding music repertoire; using correct vocal production; using correct phrasing; gaining poise and confidence; and interpreting musical terms, symbols and abbreviations. Our ultimate goal through these and other activities is ***total musicianship***.

ATTENDANCE

Attendance is extremely important in a performance-oriented course. Each student is a valuable and essential member of the group. Since part of learning about music is learning how to perform it, students **are required to be at all performances of their group**. Where a conflict between a school performance and a non-school event cannot be worked out, the student will be expected to be at the *school performance*. ***It is not possible to make up a concert!*** Check the concert dates carefully and often! Be responsible! School policy also states that "students must attend

at least 90% of class sessions in a semester to receive a passing grade or credit.”

A student may be excused from a performance if:

1. He/she is extremely ill and a *parent* calls me at school ***prior*** to the concert. (472-2808)
2. The parent informs me *in writing* at least two weeks before the performance about an important conflict; a decision will be made on an individual basis.

(Birthdays and parties are **not** excused.)

PARTICIPATION AT CONCERTS

Students are expected to be at concerts at least 30 minutes prior to the beginning time unless other directions are given, and to stay for the entire concert since hearing and seeing others perform is an important part of the learning process. The evening concert is the **Final Exam** for each grading period. The concert schedule will be handed out within the first 10 school days.

MUSIC AND FOLDERS

Music and folders are to be well taken care of by students. If any loss or damage to music **not** due to normal, careful use is found, the student will be charged for the cost of replacement. Do not write on your folders or your music unless told to do so.

UNIFORMS

Uniforms are an important part of performance tradition. Uniform appearance helps define each group as a whole, creates a sense of unity, and helps to create a certain attitude in the performers. It is our hope that every member of the chorus will willingly acquire their own approved apparel, however, we understand that some may not be able. Therefore, we encourage you to do what you can as an individual, but do not hesitate to ask for assistance if there are any problems. Detailed information regarding uniforms will be sent home in the near future.

FIELD TRIPS

The choruses perform many services for the community by singing at other schools, retirement centers, special celebrations, public concerts, etc. Chorus members are expected to follow our school policies and district school bus rules so as to reflect pride in our school and organization.

SOLOS

Singing a solo at concerts is **not** a requirement. If a student wishes to sing a solo, he/she must: a) select music appropriate for public school and have it approved by the teacher b) work with the teacher *even if* taking private lessons or practicing at home, and c) have music totally prepared and perform it from memory for the teacher at least one week prior to the concert. *The teacher will reserve the final say as to whether or not the student is ready to perform the solo.*

TESTING

Students will be tested both by performing music individually or in small groups, and taking written tests on information presented in class. Any notebook paper turned in should follow the same manuscript form that is used in English class. Students who miss a quiz or written assignment will have one week from the time that they return to make up the work.

GRADING POLICY

Student's grades will be based on a percentage of total points possible. Total points will vary each grading period depending on the number of rehearsals, concerts, quizzes, and class participation. **Homework** will rarely be given unless a student needs more time to complete a task.

90-100%	=	A
80-89%	=	B
70-79%	=	C
60-69%	=	D
59-0%	=	F

Points are earned for every activity and may vary; approximate points are as follows:

- class participation @ 10 points daily (approximately 450 points-70%)
- quizzes and tests @ 20 points each (approximately 60-80 points-10%)
- concerts @ 120 points each (approximately 120 points-20%)
- (extra rehearsals @ 30 points each only when necessary)

It is obvious by looking at these that the most important part of the grade is earned by *being present in class and on task at all times!* Students who wish to earn an "A" in chorus need to demonstrate excellence in their rehearsal habits on a daily basis and in their performances. Excellent rehearsal and performance habits include:

- 1) Having good singing posture at all times
- 2) Participating in all class activities in an energetic, positive manner
- 3) Staying focused and on task (not visiting or using class as a social event)
- 4) Being present at all performances and accountable for appropriate stage presence
- 5) Demonstrating correct vocal techniques (such as vowel placement and space)
- 6) Being present at a minimum of 90% of the rehearsals (*Rehearsals cannot be recreated or made up.*)

The evening concert is our **Final Exam** for each grading period and the culmination of all of our work in rehearsals. **Extra credit opportunities will be made available *only* to those students who have had a serious extended illness. *It is not possible to make up a concert!***

CLASS RULES

1. BE ON TIME
Be in your seat with your folder when the bell begins to ring.
Use the drinking fountain between classes---not during.
2. BE PREPARED FOR CLASS
Use correct singing posture. Do only the music activity at hand. Always have paper, pen, and pencil with you.
3. FOLLOW DIRECTIONS
Directions will be given carefully and precisely in class and you will be expected to listen and follow them exactly.
The teacher dismisses class; not the bell.
Remain in your assigned seat at all times.
4. NO GUM OR EATING IN THE CLASSROOM
No foreign objects in your mouth during chorus.
(Violation of this rule will result in automatic detention.)

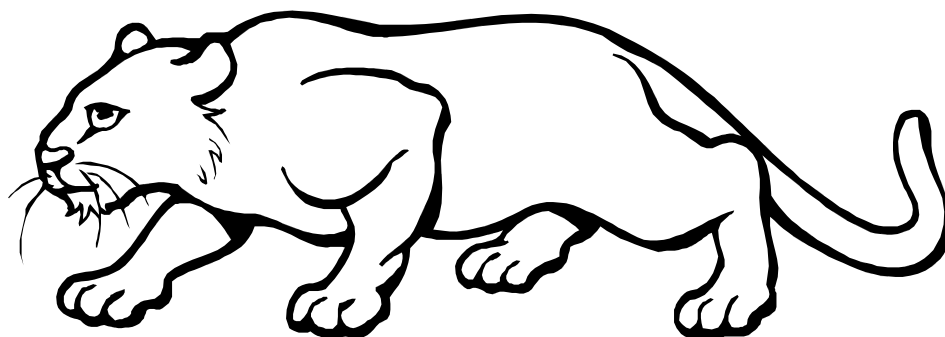
5. **SHOW RESPECT FOR PEOPLE AND PROPERTY**
Only speak when called upon by the teacher.
No talking during announcements.
The front table and piano is for teacher use only.
Take good care of music and folders.
Put music away properly before leaving.
No students are permitted in the music office w/o permission.
No students are permitted in the practice rooms w/o permission.
NEVER touch music equipment without permission.
Be courteous to others at all times!
6. **TWO EMERGENCY PASSES WILL BE PERMITTED PER QUARTER.**
(i.e. restroom, nurse)

Note: All school rules will be followed strictly in the chorus room, including no backpacks or sidebags.

DISCIPLINE POLICY

Since discipline problems interrupt the rehearsal and take time away from others, the following discipline policy will be implemented when a student violates any class rules.

- 1st violation - Verbal warning (conference with teacher)
- 2nd violation – Detention (15 minutes), Behavior Improvement Activity
- 3rd violation – Detention (25 minutes), parent contact, Behavior Improvement Activity
- 4th violation – Detention (30 minutes), parent contact, Behavior Improvement Activity
- 5th violation - Administrative involvement until problem is solved
Possible removal from class



TO THE PARENTS

Your presence at our concerts is important to your children. Junior high students need to know that you really do care! Take time out of your busy schedule to see and hear these fine young people perform. I'm sure you will have an enjoyable time and feel very proud of your teenager! If you bring small children to the concerts, please help them to sit quietly with you during the concert. *Proper concert etiquette is a learned behavior.*

Please feel free to call me if you have any questions or concerns. My school number is 472-2808 and I can usually be reached from 8:00 – 8:45 am. Many thanks for your help and support in making this a successful school year!

Sincerely,

Janice Colburn
Choral Director



Parent/Guardian: Please complete the information below and return to Mrs. Colburn by _____.

Name of student _____ Chorus hour _____

Name of parent/guardian _____

Phone number _____

I would be happy to help.....(circle if applies)

video tape concerts

chaperone field trips

help with choreography

run sectionals

play piano

other:

I have read and understand the responsibilities of my son/daughter in chorus.

parent/guardian signature _____

Date _____