

Baritone

# Poston Band Warm-up Packet

J. Bock

## Long Tone 1

Two staves of musical notation for Long Tone 1. The first staff is in 4/4 time and contains five measures of whole notes: G2, B1, D2, F1, and G2. The second staff contains six measures: G2, B1, D2, F1, a whole rest, and G2 with a fermata.

## Long Tone 2

Two staves of musical notation for Long Tone 2. The first staff contains eight measures: G2, B1, D2, whole rest, F1, G2, whole rest, and D2. The second staff contains eight measures: G2, whole rest, B1, D2, whole rest, F1, whole rest, and G2 with a fermata.

## Long Tone 3

Two staves of musical notation for Long Tone 3. The first staff contains eight measures: G2, A2 (with a sharp sign), B2, whole rest, D2, E2, F2, and G2. The second staff contains eight measures: G2, whole rest, A2, B2, whole rest, D2, whole rest, and G2 with a fermata.

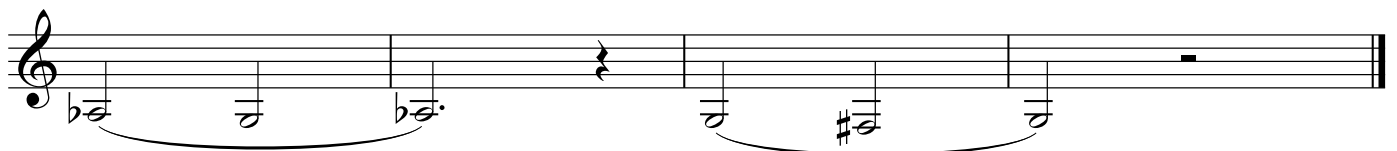
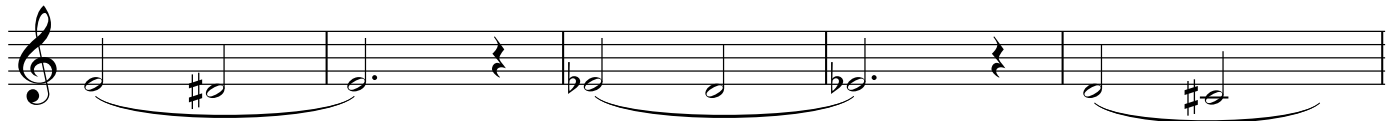
## Long Tone 4

Three staves of musical notation for Long Tone 4. The first staff contains eight measures: G2, A2 (with a sharp sign), B2, whole rest, D2, E2, F2, and G2. The second staff contains four measures: G2, whole rest, A2, B2, whole rest, D2, whole rest, and G2 with a sharp sign. The third staff contains four measures: G2, whole rest, A2, B2, whole rest, D2, whole rest, and G2 with a fermata.

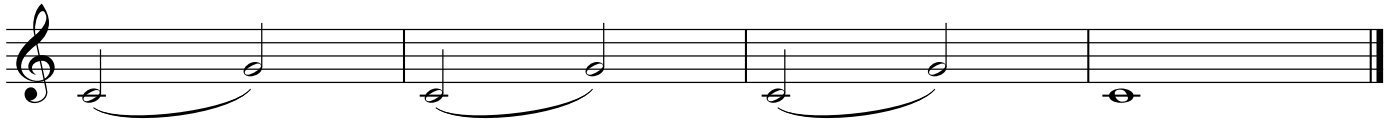
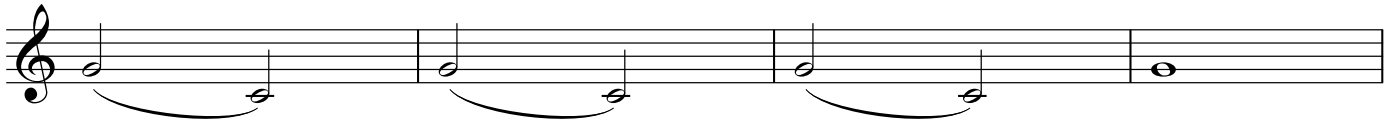
Long Tone 5



Long Tone 6



Warm-up 1-A



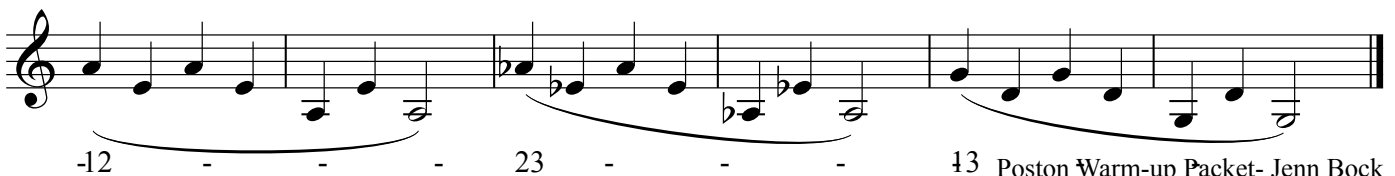
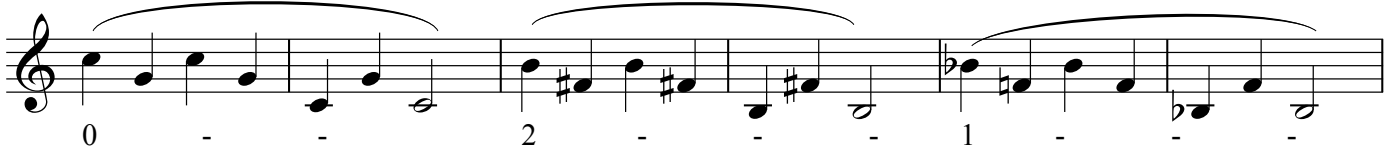
Warm-up 1-B



Warm-up 1-C



Warm-up 2-A



Warm-up 2-B

Two staves of musical notation for Warm-up 2-B. The first staff contains three measures of music with a slur over the first two measures. The second staff contains three measures of music with a slur over the first two measures. The key signature changes from one sharp (F#) to one flat (Bb) between the staves.

Warm-up 3-A

Four staves of musical notation for Warm-up 3-A. The first staff contains three measures of music with a slur over the first two measures. The second staff contains three measures of music with a slur over the first two measures. The third staff contains three measures of music with a slur over the first two measures. The fourth staff contains three measures of music with a slur over the first two measures. The key signature changes from one sharp (F#) to one flat (Bb) between the staves.

Warm-up 3-B

Three staves of musical notation for Warm-up 3-B. The first staff contains three measures of music with a slur over the first two measures. The second staff contains three measures of music with a slur over the first two measures. The third staff contains three measures of music with a slur over the first two measures. The key signature changes from one flat (Bb) to two flats (Bb, Eb) between the staves.

Warm-up 3-C

Baritone

Warm-up 3-C consists of three staves of music. The first staff begins with a treble clef and a key signature of one flat (B-flat). It features a series of eighth and sixteenth notes, with slurs grouping them into phrases. The second staff continues the melodic line with similar rhythmic patterns and slurs. The third staff concludes the exercise with a final cadence, marked with a double bar line.

Warm-up 4-A

Warm-up 4-A consists of three staves of music. The first staff begins with a treble clef and a key signature of one flat. It features a series of eighth and sixteenth notes, with slurs grouping them into phrases. The second staff continues the melodic line with similar rhythmic patterns and slurs. The third staff concludes the exercise with a final cadence, marked with a double bar line.

Warm-up 4-B

Warm-up 4-B consists of four staves of music. The first staff begins with a treble clef and a key signature of one flat. It features a series of eighth and sixteenth notes, with slurs grouping them into phrases. The second staff continues the melodic line with similar rhythmic patterns and slurs. The third staff concludes the exercise with a final cadence, marked with a double bar line.