

Baritone Saxophone

# Poston Band Warm-up Packet

J. Bock

## Long Tone 1

Two staves of musical notation for Long Tone 1. The first staff is in treble clef with a key signature of one sharp (F#) and a 4/4 time signature. It contains five measures of whole notes: F#4, G4, A4, B4, and C5. The second staff continues with four measures of whole notes: D5, E5, F5, and G5, followed by a final measure with a whole note G5 and a fermata.

## Long Tone 2

Two staves of musical notation for Long Tone 2. The first staff is in treble clef with a key signature of one sharp (F#) and a 4/4 time signature. It contains eight measures of whole notes: F#4, G4, A4, B4, C5, D5, E5, and F5. The second staff continues with four measures of whole notes: G5, A5, B5, and C6, followed by a final measure with a whole note C6 and a fermata.

## Long Tone 3

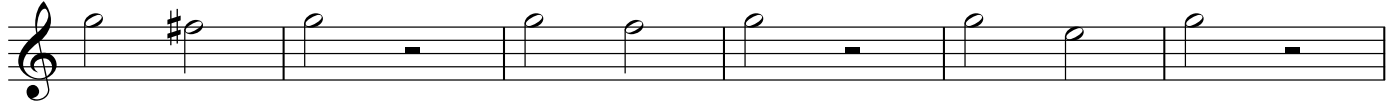
Two staves of musical notation for Long Tone 3. The first staff is in treble clef with a key signature of one sharp (F#) and a 4/4 time signature. It contains eight measures of whole notes: F#4, G4, A4, B4, C5, D5, E5, and F5. The second staff continues with four measures of whole notes: G5, A5, B5, and C6, followed by a final measure with a whole note C6 and a fermata.

## Long Tone 4

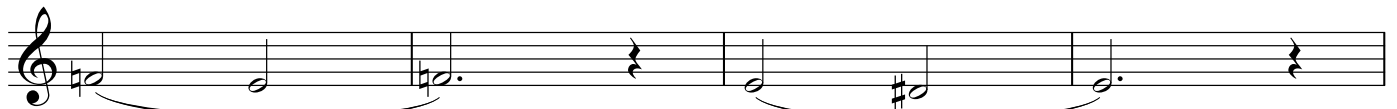
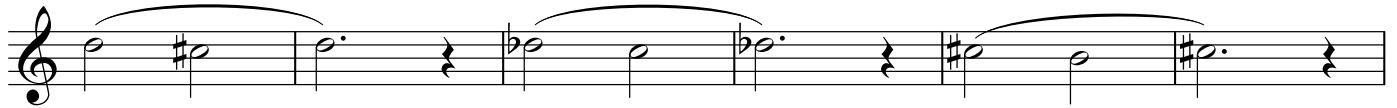
Three staves of musical notation for Long Tone 4. The first staff is in treble clef with a key signature of one sharp (F#) and a 4/4 time signature. It contains eight measures of whole notes: F#4, G4, A4, B4, C5, D5, E5, and F5. The second staff continues with four measures of whole notes: G5, A5, B5, and C6, followed by a final measure with a whole note C6 and a fermata. The third staff continues with four measures of whole notes: D5, E5, F5, and G5, followed by a final measure with a whole note G5 and a fermata.

Baritone Saxophone

Long Tone 5



Long Tone 6



Baritone Saxophone

Warm-up 1-A



Warm-up 1-B



Warm-up 1-C



Warm-up 2-A



Baritone Saxophone

Warm-up 2-B

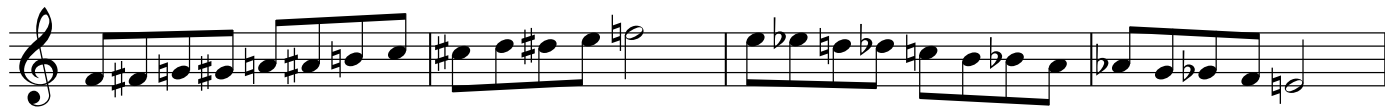
Warm-up 2-B consists of three staves of music. The first staff contains four measures of eighth-note patterns: a rising eighth-note scale, a descending eighth-note scale, a quarter note followed by an eighth-note scale, and a quarter note followed by an eighth-note scale with a key signature change to one sharp. The second staff contains four measures of eighth-note patterns: a quarter note followed by an eighth-note scale with a key signature change to one flat, a quarter note followed by an eighth-note scale, a quarter note followed by an eighth-note scale with a key signature change to two sharps, and a quarter note followed by an eighth-note scale with a key signature change to two sharps. The third staff contains four measures of eighth-note patterns: a quarter note followed by an eighth-note scale with a key signature change to two flats, a quarter note followed by an eighth-note scale with a key signature change to two flats, a quarter note followed by an eighth-note scale with a key signature change to one sharp, and a quarter note followed by an eighth-note scale with a key signature change to one sharp.

Warm-up 3-A

Warm-up 3-A consists of two staves of music. The first staff contains four measures of half notes with slurs: a half note with a natural sign, a half note with a sharp sign, a half note with a natural sign, and a half note with a natural sign. The second staff contains four measures of half notes with slurs: a half note with a sharp sign, a half note with a sharp sign, a half note with a natural sign, and a half note with a natural sign.

Warm-up 3-B

Warm-up 3-B consists of two staves of music. The first staff contains four measures of half notes with slurs: a half note with a natural sign, a half note with a sharp sign, a half note with a sharp sign, and a half note with a natural sign. The second staff contains four measures of half notes with slurs: a half note with a natural sign, a half note with a flat sign, a half note with a flat sign, and a half note with a sharp sign.



Warm-up 4-A

