

Poston Band Warm-up Packet

Trombone

J. Bock

Long Tone 1

Two staves of musical notation for Long Tone 1. The first staff is in bass clef with a 4/4 time signature and a key signature of one flat (B-flat). It contains five measures of whole notes: B1, B1, B1, B1, and B1. The second staff continues with four measures of whole notes: B1, B1, B1, and B1, followed by a final measure with a whole note B1 and a fermata.

Long Tone 2

Two staves of musical notation for Long Tone 2. The first staff is in bass clef with a key signature of one flat (B-flat). It contains eight measures: B1, B1, B1, a whole rest, B1, B2, B1, and a whole rest. The second staff continues with four measures: B1, a whole rest, B1, B2, B1, a whole rest, and a final measure with a whole note B1 and a fermata.

Long Tone 3

Two staves of musical notation for Long Tone 3. The first staff is in bass clef with a key signature of one flat (B-flat). It contains eight measures: B1, B1, B1, a whole rest, B1, B1, B1, and a whole rest. The second staff continues with four measures: B1, B1, a whole rest, B1, B1, a whole rest, and a final measure with a whole note B1 and a fermata.

Long Tone 4

Three staves of musical notation for Long Tone 4. The first staff is in bass clef with a key signature of one flat (B-flat). It contains eight measures: B1, B1, a whole rest, B1, B1, a whole rest, B1, and B1. The second staff continues with four measures: B1, a whole rest, B1, B1, a whole rest, B1, and B1. The third staff continues with four measures: B1, a whole rest, B1, B1, a whole rest, and a final measure with a whole note B1 and a fermata.

Trombone

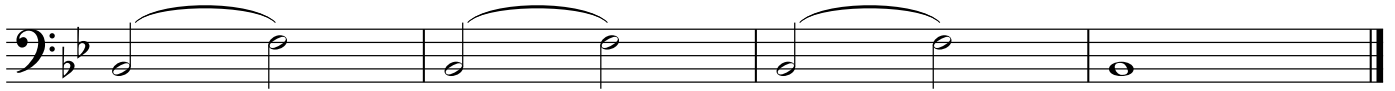
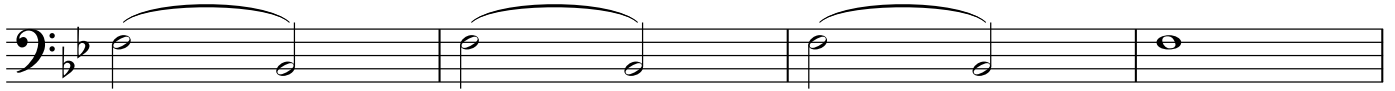
Long Tone 5

Two staves of musical notation for Long Tone 5. The first staff contains eight measures of music, and the second staff contains eight measures. The key signature has one flat (B-flat). The notes are: B-flat, B-flat, B-flat, B-flat, B-flat, B-flat, B-flat, B-flat. The rhythm consists of quarter notes with rests in the second and fourth measures of each staff.

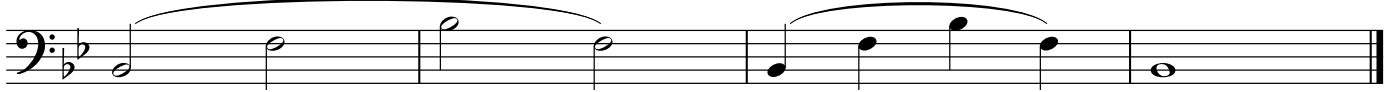
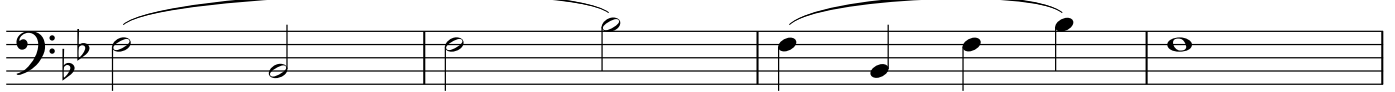
Long Tone 6

Five staves of musical notation for Long Tone 6. The first staff contains six measures, and the subsequent four staves each contain six measures. The key signature has one flat (B-flat). The notes are: B-flat, B-flat, B-flat, B-flat, B-flat, B-flat, B-flat, B-flat, B-flat, B-flat, B-flat, B-flat, B-flat, B-flat, B-flat, B-flat. The rhythm consists of quarter notes with rests in the second and fourth measures of each staff. Slurs are used to group notes across measures.

Warm-up 1-A



Warm-up 1-B



Warm-up 1-C



Warm-up 2-A



1 - - - 2 - - - 3 - -



4 - - - 5 - - - 6 - -

Trombone

Warm-up 2-B

Two staves of musical notation for Warm-up 2-B. The first staff contains three measures of music with a slur over the first two measures. The second staff contains three measures of music with a slur over the first two measures. The key signature has one flat (B-flat), and the time signature is 4/4.

Warm-up 3-A

Three staves of musical notation for Warm-up 3-A. Each staff contains three measures of music with a slur over the first two measures. The key signature has one flat (B-flat), and the time signature is 4/4.

Warm-up 3-B

Three staves of musical notation for Warm-up 3-B. Each staff contains three measures of music with a slur over the first two measures. The key signature has one flat (B-flat), and the time signature is 4/4.

Warm-up 3-C

Trombone

Three staves of musical notation for the Trombone part of Warm-up 3-C. The first staff begins with a bass clef and a key signature of one flat (B-flat). The music consists of eighth and quarter notes, some beamed together, with slurs and ties. The second staff continues the melodic line with similar rhythmic patterns. The third staff concludes the exercise with a double bar line.

Warm-up 4-A

Three staves of musical notation for Warm-up 4-A. The first staff starts with a bass clef and a key signature of one flat. It features eighth notes and quarter notes, some beamed together, with slurs and ties. The second and third staves continue the exercise, ending with a double bar line.

Warm-up 4-B

Four staves of musical notation for Warm-up 4-B. The first staff begins with a bass clef and a key signature of one flat. It contains eighth notes and quarter notes, some beamed together, with slurs and ties. The second and third staves continue the exercise with similar rhythmic patterns. The fourth staff concludes the exercise with a double bar line.