
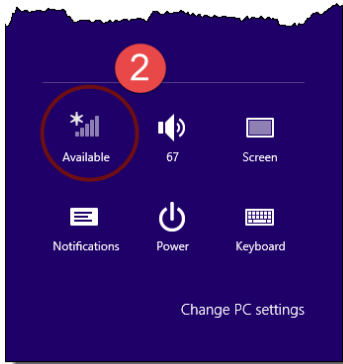


# Connecting to Personal & Public WiFi with Your MPS Student Device

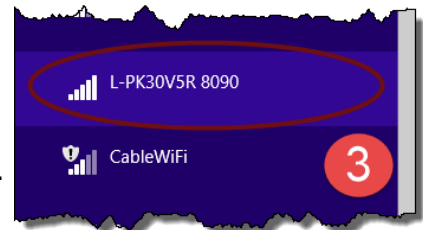
This tutorial will guide you through the steps necessary to wirelessly connect your student device to the Internet when you are outside of the Mesa Public Schools network.

1. Open the **Charms Bar**. This can be done by either sliding your finger from the far right side of the screen in toward the center or by pressing  on your keyboard. Select the **Settings** icon.



2. Next, select the wireless network selection icon.

3. Select the name of the wireless network to which you would like to connect.

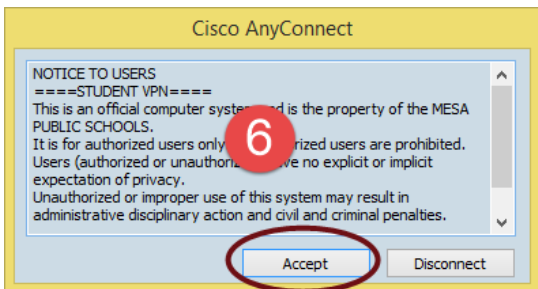
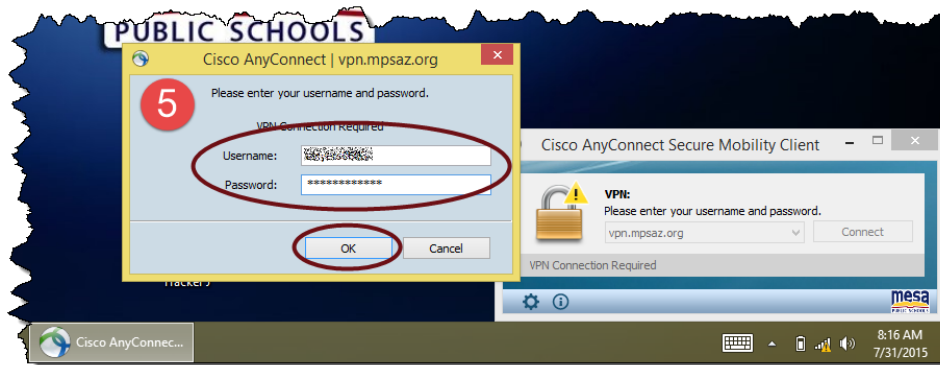


4. Select **Connect**. You may select **Connect automatically**, if desired, in order to avoid steps 1-3 in the future.



5. When prompted, enter your **username** and **password**. **This is the same username and password you use to log into your computer.**

6. Finally, select **Accept** from within the Cisco AnyConnect pop-up window.



*Note: While the WiFi network to which you are connected may display "Limited" as its connection status, this will not hinder your ability to use the Internet. This is a result of the process through which a district device is connected to an outside network.*

