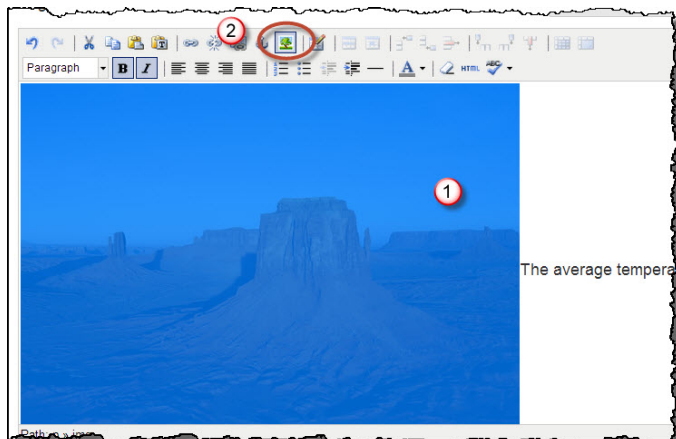


# Resizing Images Proportionately

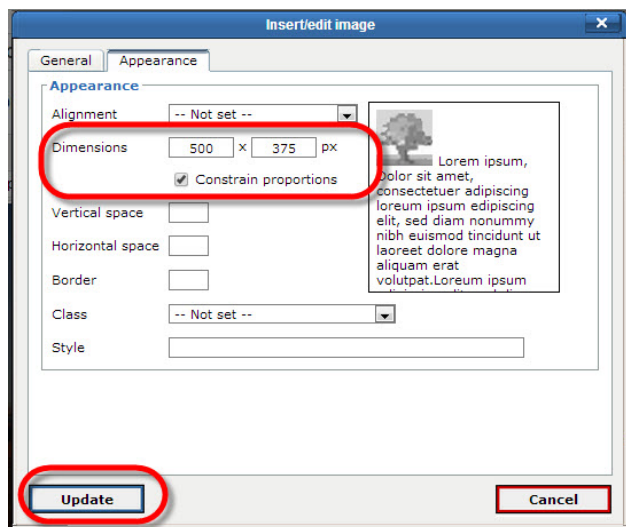
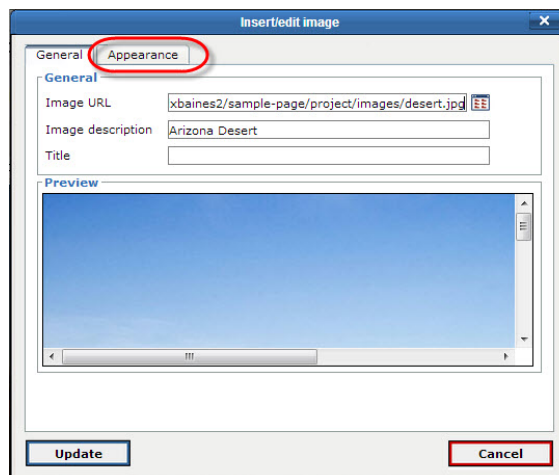


Once you have inserted an image into an Architeck page, you may want to change the size of the image. Architeck allows users to change the size of images while assuring that it maintains the correct proportions.



While in edit mode, (1) click one time on the image. (2) Select the **Insert/edit image** icon.

When the **Insert/edit image** window opens, you will see the preview of the image. Click on the **Appearance** tab.



By default, the **Constrain proportions** feature is checked. This will provide you the ability to change either the width or the height of your image and the corresponding dimension will be altered in proportion.

To resize the image, simply change one of the numbers to the right of **“Dimensions.”** Once you change one number, click in the white space and Architeck will mathematically change the other number for you.

To apply these changes, select the **“Update”** button in the lower-left corner of the pop-up window.

Your picture is now resized. Be sure and select **“Publish”** to save your changes