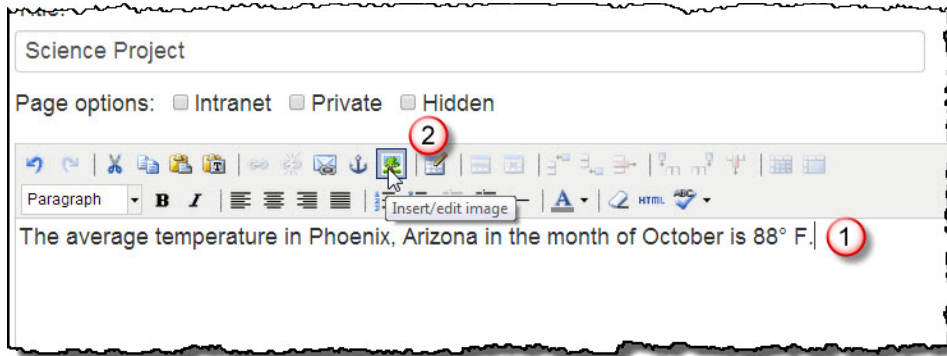
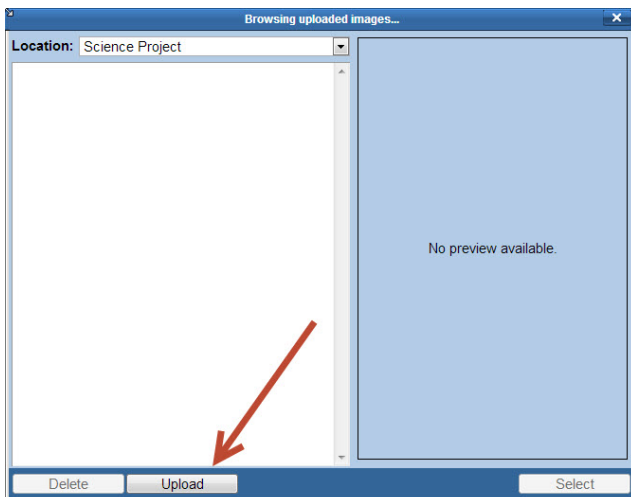
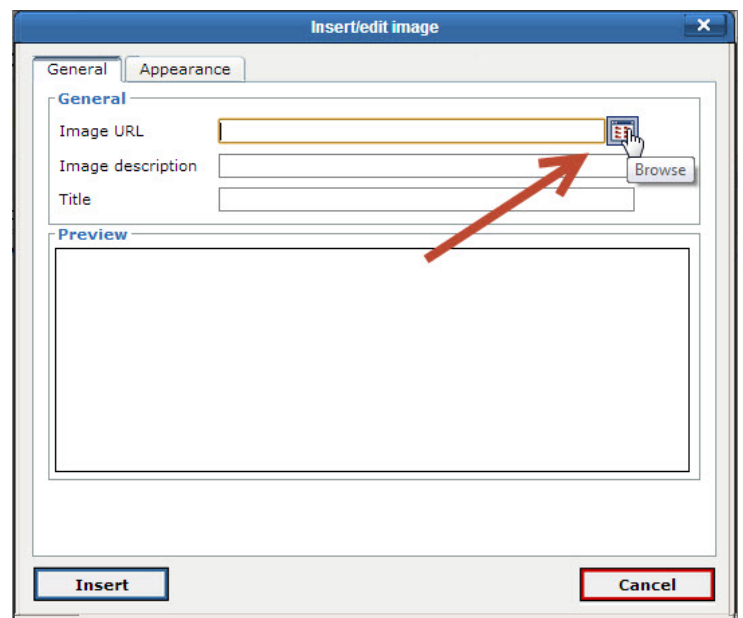


Insert an Image



While in Edit mode, (1) click where you want to insert your image. (2) In the Editor Window toolbar, select the **Insert/edit image** icon.

From within the **Insert/edit image** window, click on the **Browse** icon.

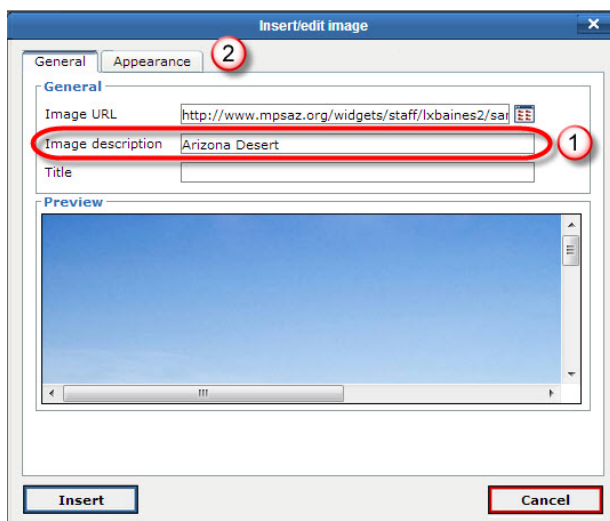
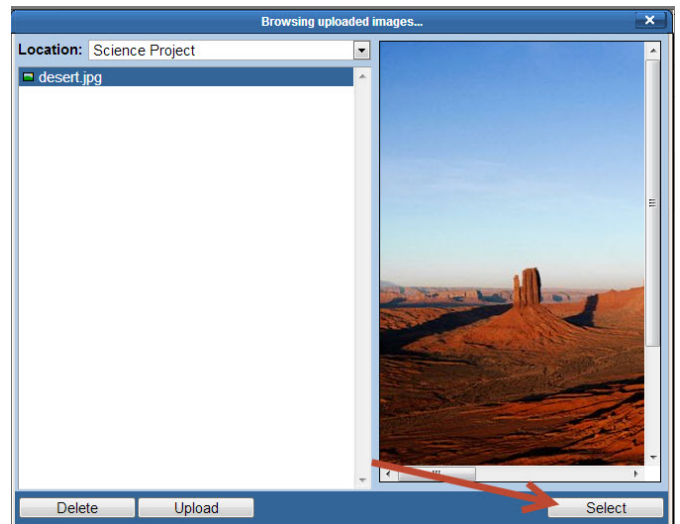


Select **“Upload.”**

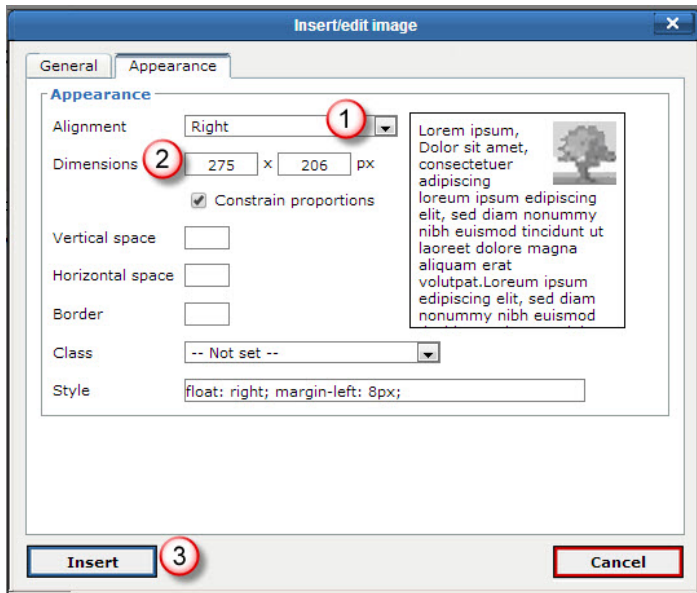


Navigate to the image you wish to upload from your computer. (1) Click one time on the image and then (2) select “Open.”

The picture now appears in the list on the left. Click one time on the title to highlight it. You will get a preview of your image on the right side. Click “Select.”



(1) Provide a brief description of your image. (2) You have the option to click on the “Appearance” tab. This will allow you to resize the image and/or make the text wrap around the image. *These two items are also covered in other tutorials.*



(1) To set up the text wrap, utilize the drop-down to the right of “**Alignment.**” Select **Left** or **Right.**

(2) To resize the image, simply change one of the numbers to the right of “**Dimensions.**” By default, the box is checked to “**Constrain proportions.**” Once you change one number, click in the white space and Architeck will mathematically change the other number for you.

(3) Select “**Insert.**”

Select “**Publish**” from the Architeck toolbar at the top of the page.

