

## POSTER and FLYER RULES

*Be sure to follow these instructions otherwise it may result in flyers and banners being removed.*

- **Only painters tape OR command strips may be used.** Duct tape, masking tape, scotch tape, or any other tape used WILL result in your poster(s) being removed.
- **Which surfaces can we use to display posters?**

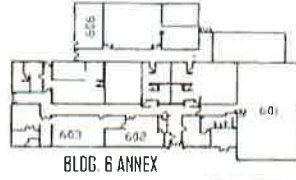
*See map below for specific locations where it is permitted to hang and not permitted to hang. Hanging in unapproved locations will result in flyer being removed. When hanging flyers and banners, be sure to hang them straight. Use enough tape to keep secure. **DO NOT COVER OTHER FLYERS OR BANNERS.***

### Yes

- Grip Strips (if available)
  - If a grip strip is available on a wall, then flyers MUST be hung ONLY there.
- Teacher's doors (WITH PERMISSION)
- Brick wall INSIDE (**Only 1100, 300, 700, and 800 Buildings**)
- You may only have one poster or flyer per 8 ft section of wall OR per grip strip- **NO BUNCHING FLYERS IN SAME SPOT**
- See map below for specific locations

### No

- Windows including glass on doors
- Doors including metal frames, area above doors, in between doors, and the glass.
- Stucco outside
- Wood
- Lockers
- Neighborhood around campus
- On or Above Drinking Fountains
- Ceilings
- Outside on any surface
- Covering other flyers
- Brick (outside)
- Collaborative hallways (East/West) except for Grip Strips for flyers ONLY

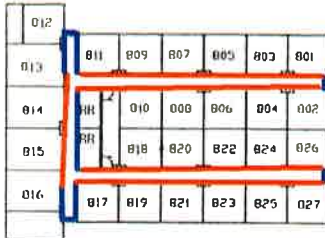


BLDG. 6 ANNEX

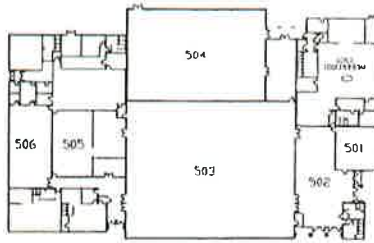
DO HANG HERE  
DO NOT HANG HERE

SCALE: 1/8" = 1'-0" (80x) STAIRS

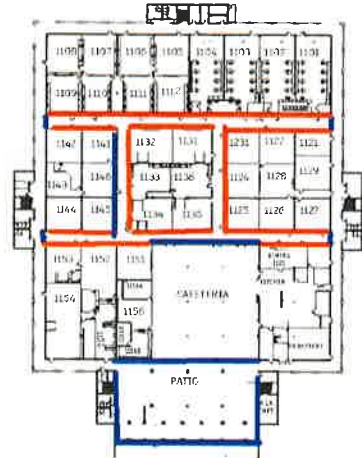
Training Sports Med



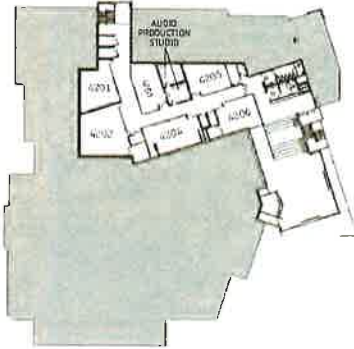
BLDG. 8 MATH



BLDG. 5 GYMNASIUM/P.E.



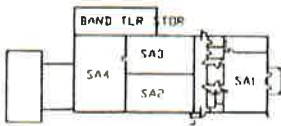
BLDG. 1 ACADEMIC BUILDING - LOWER LEVEL



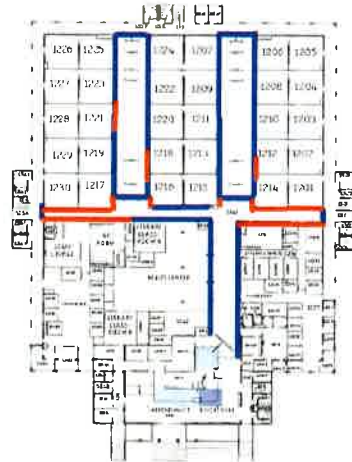
BLDG. 4 FINE ARTS | UPPER LEVEL



BLDG. 4 FINE ARTS | LOWER LEVEL



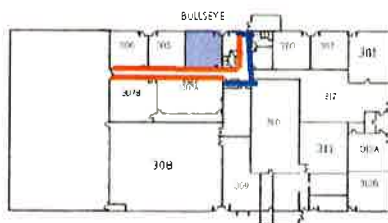
BLDG. 9



BLDG. 1 ACADEMIC BUILDING - UPPER LEVEL



BLDG. 7 ENGLISH



BLDG. 3 C.T.E.



# MOUNTAIN VIEW HIGH SCHOOL