

Poston Band Warm-up Packet

Horn in F

J. Bock

Long Tone 1

Two staves of musical notation for Long Tone 1. The first staff is in 4/4 time with a key signature of one flat (Bb). It contains five measures of whole notes: Bb2, Bb3, Bb4, Bb5, and Bb6. The second staff contains six measures: Bb2, Bb3, Bb4, Bb5, a whole rest, and Bb6 with a fermata.

Long Tone 2

Two staves of musical notation for Long Tone 2. The first staff contains eight measures: Bb2, Bb3, Bb4, a whole rest, Bb5, Bb6, Bb7, and a whole rest. The second staff contains eight measures: Bb2, Bb3, a whole rest, Bb4, Bb5, Bb6, a whole rest, and Bb6 with a fermata.

Long Tone 3

Two staves of musical notation for Long Tone 3. The first staff contains eight measures: Bb2, Bb3, Bb4, a whole rest, Bb5, Bb6, Bb7, and Bb8. The second staff contains eight measures: Bb2, Bb3, a whole rest, Bb4, Bb5, Bb6, a whole rest, and Bb6 with a fermata.

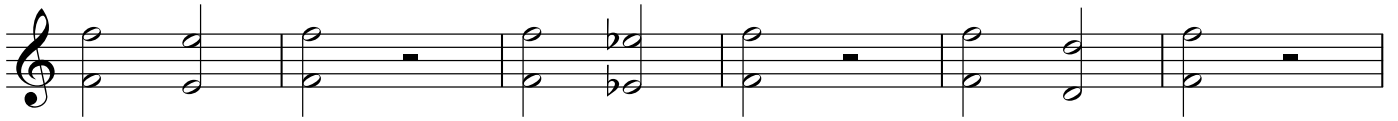
Long Tone 4

Three staves of musical notation for Long Tone 4. The first staff contains eight measures: Bb2, Bb3, Bb4, a whole rest, Bb5, Bb6, Bb7, and Bb8. The second staff contains four measures: a whole rest, Bb5, Bb6, and Bb7 with a sharp sign. The third staff contains four measures: a whole rest, Bb5, Bb6, and Bb6 with a fermata.

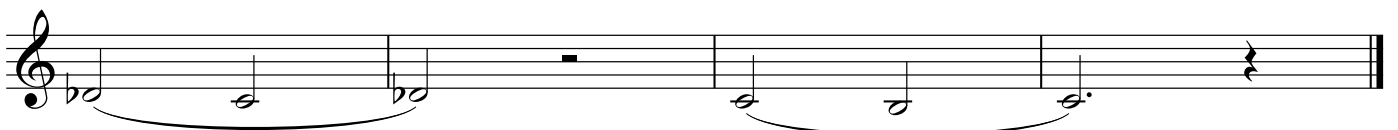
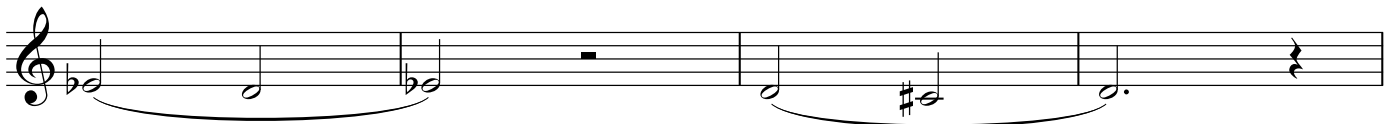
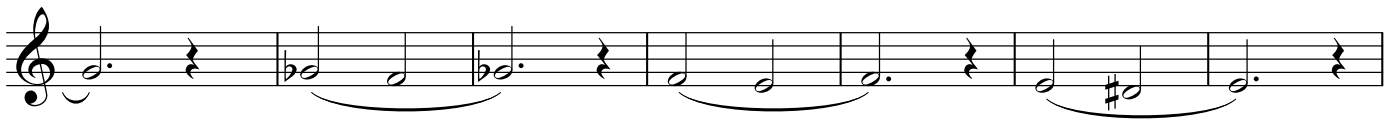
2

Long Tone 5

Horn in F



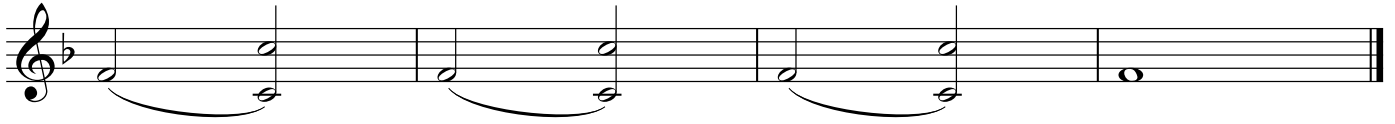
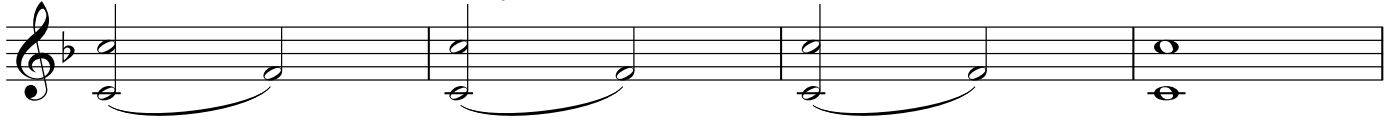
Long Tone 6



Warm-up 1-A

Horn in F

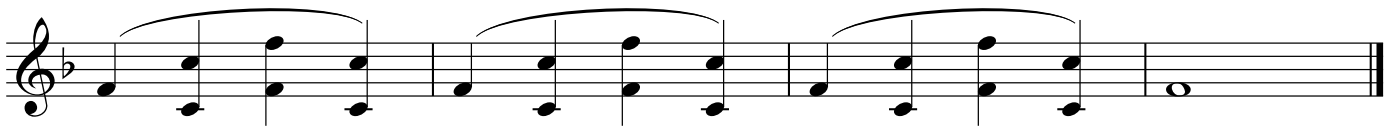
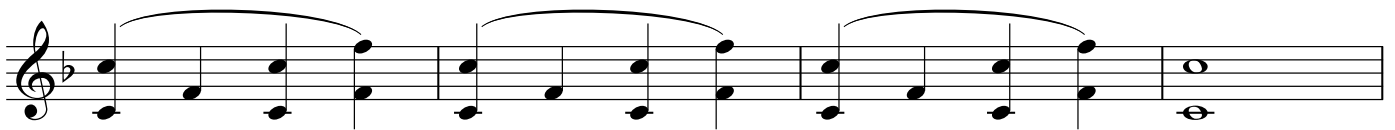
choose whichever note is more comfortable



Warm-up 1-B



Warm-up 1-C



Warm-up 2-A



Horn in F

Warm-up 2-B

Warm-up 2-B consists of two staves of music. The first staff contains three measures of music, each with a slur over a pair of notes. The first measure is in C major, the second in C major, and the third in F major. The second staff contains three measures of music, each with a slur over a pair of notes. The first measure is in C major, the second in F major, and the third in C major.

Warm-up 3-A

Warm-up 3-A consists of three staves of music. The first staff contains three measures of music, each with a slur over a pair of notes. The first measure is in C major, the second in C major, and the third in F major. The second staff contains two measures of music, each with a slur over a pair of notes. The first measure is in C major, and the second is in F major. The third staff contains two measures of music, each with a slur over a pair of notes. The first measure is in C major, and the second is in F major.

Warm-up 3-B

Warm-up 3-B consists of three staves of music. The first staff contains three measures of music, each with a slur over a pair of notes. The first measure is in C major, the second in C major, and the third in F major. The second staff contains two measures of music, each with a slur over a pair of notes. The first measure is in C major, and the second is in F major. The third staff contains two measures of music, each with a slur over a pair of notes. The first measure is in C major, and the second is in F major.

Warm-up 3-C

Warm-up 3-C consists of three staves of music. The first staff begins with a treble clef and a key signature of one flat (B-flat). It contains a melodic line with eighth and sixteenth notes, featuring slurs and ties. The second staff continues the melodic line, showing chromatic movement and changes in rhythm. The third staff concludes the exercise with a final melodic phrase and a double bar line.

Warm-up 4-A

Warm-up 4-A consists of three staves of music. The first staff begins with a treble clef and a key signature of one flat. It features a melodic line with eighth notes and slurs. The second staff continues the exercise with similar rhythmic patterns and chromatic shifts. The third staff concludes the exercise with a final melodic phrase and a double bar line.

Warm-up 4-B

Warm-up 4-B consists of four staves of music. The first staff begins with a treble clef and a key signature of one flat. It features a melodic line with eighth notes and slurs. The second staff continues the exercise with similar rhythmic patterns and chromatic shifts. The third staff concludes the exercise with a final melodic phrase and a double bar line. The fourth staff is a continuation of the exercise, starting with a treble clef and a key signature of one flat, featuring a melodic line with eighth notes and slurs.